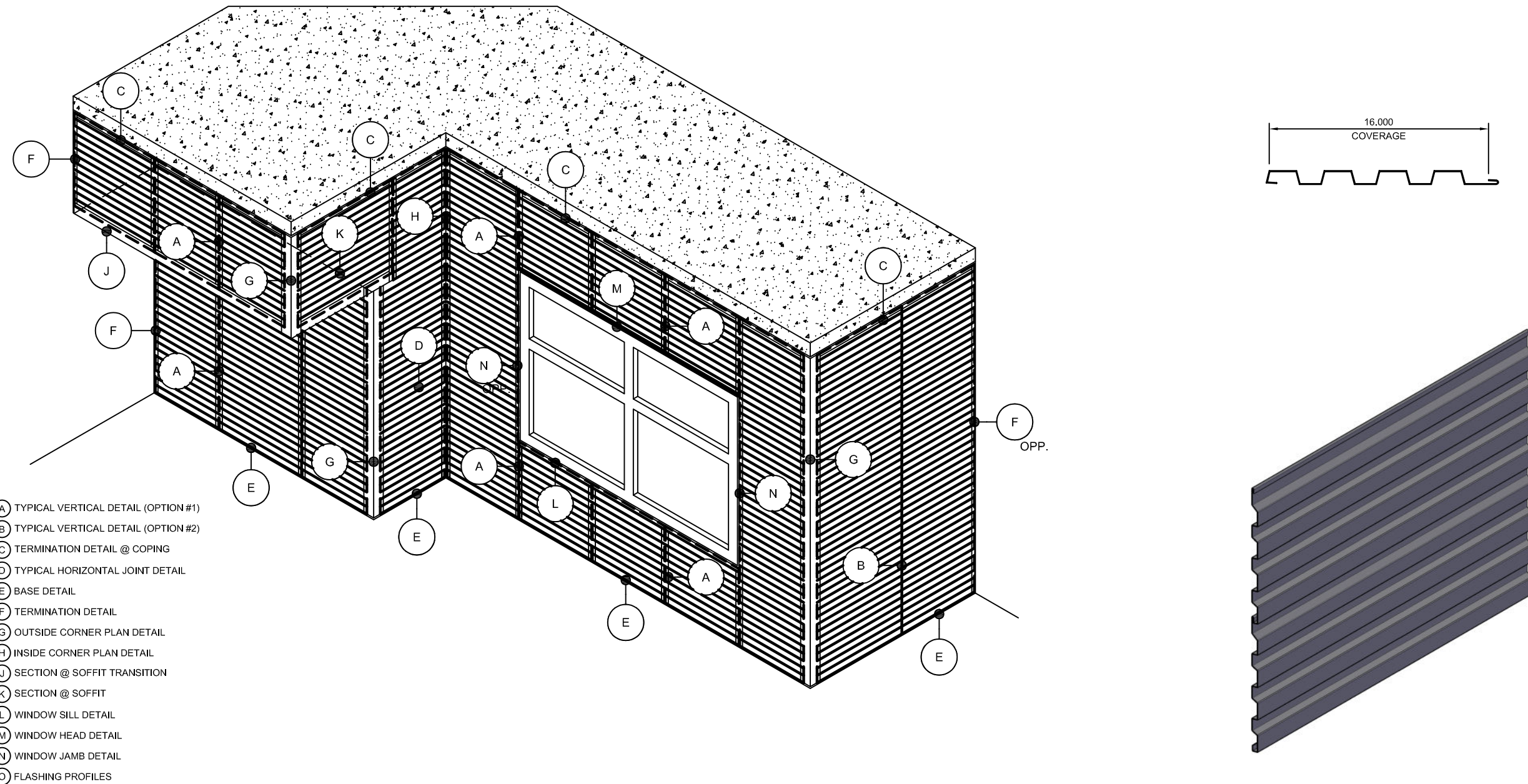


PROFILED PANEL SYSTEM

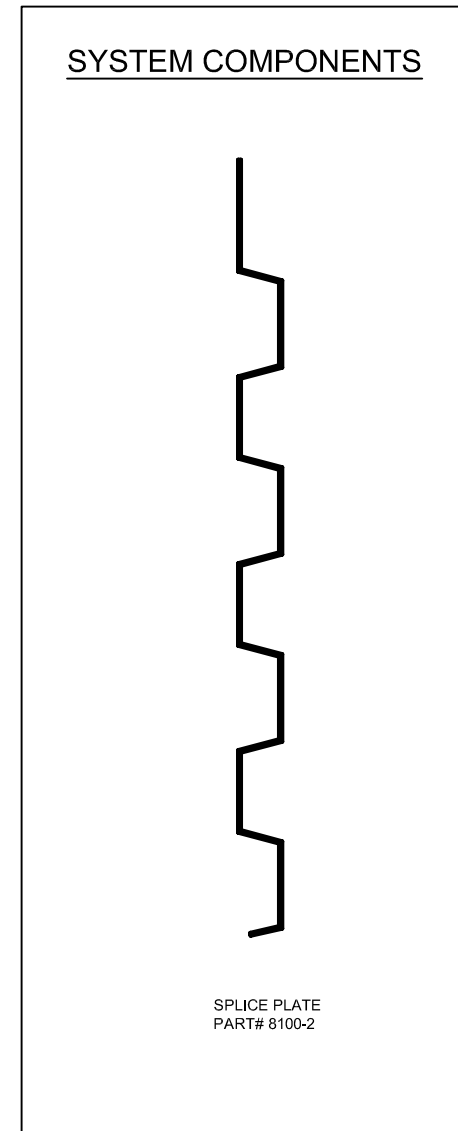
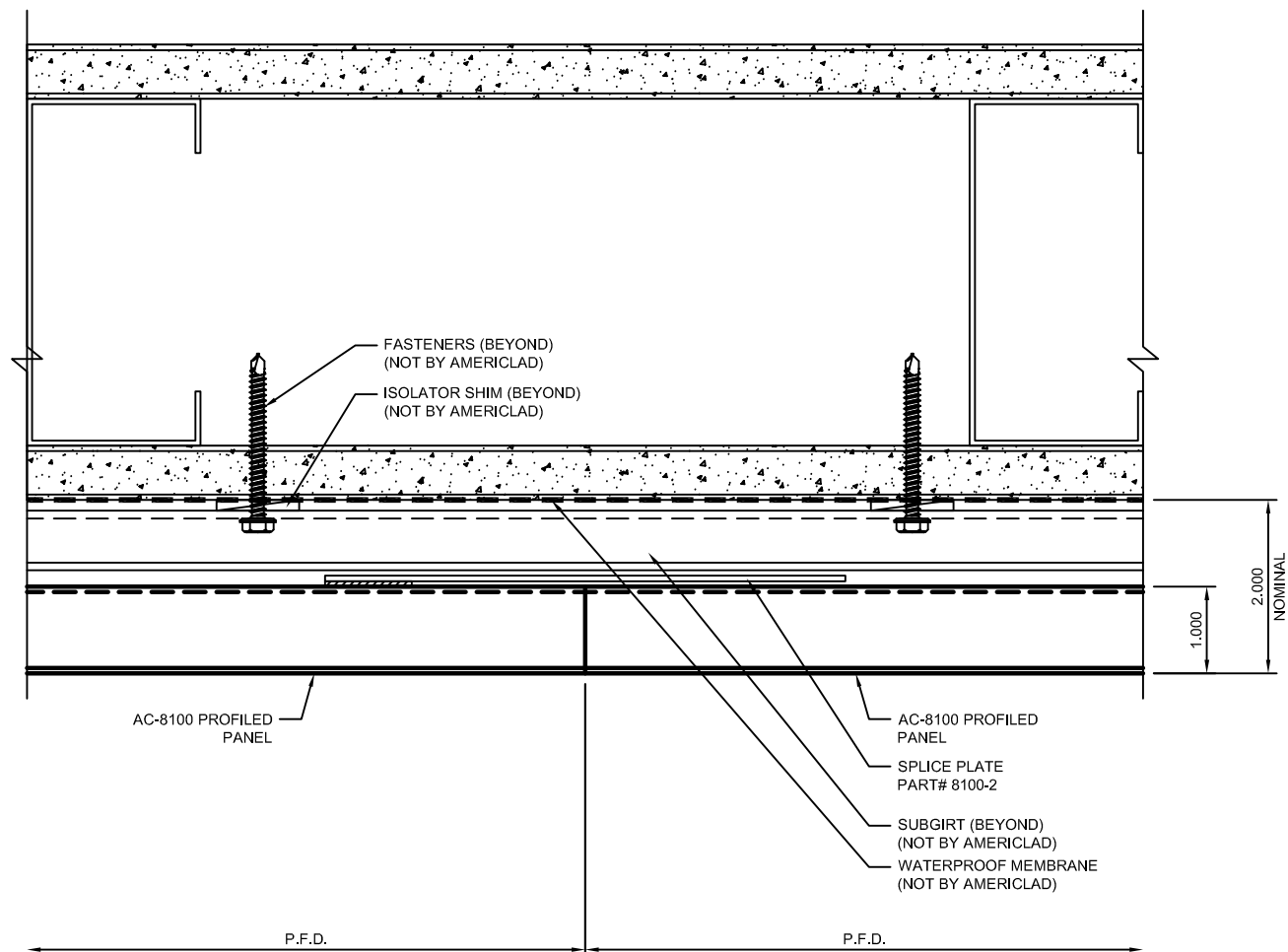
NOTE:
LOAD BEARING WALL COMPONENTS OF EITHER: 16GA STEEL STUDS, STRUCTURAL MEMBERS, MINIMUM 3/4" PLYWOOD OR CONCRETE. GYPSUM BOARD AND CEMENT BOARD ARE NOT A STRUCTURAL COMPONENT.



TYPICAL VERTICAL DETAIL (OPTION #1)

DETAIL A

NOTE:
LOAD BEARING WALL COMPONENTS OF EITHER: 16GA STEEL STUDS, STRUCTURAL MEMBERS, MINIMUM 3/4" PLYWOOD OR CONCRETE. GYPSUM BOARD AND CEMENT BOARD ARE NOT A STRUCTURAL COMPONENT.

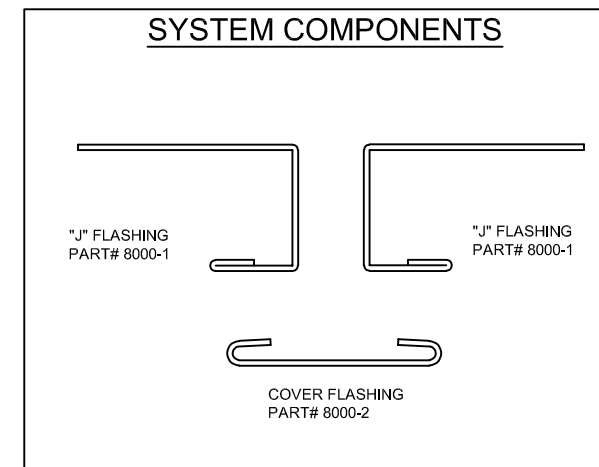
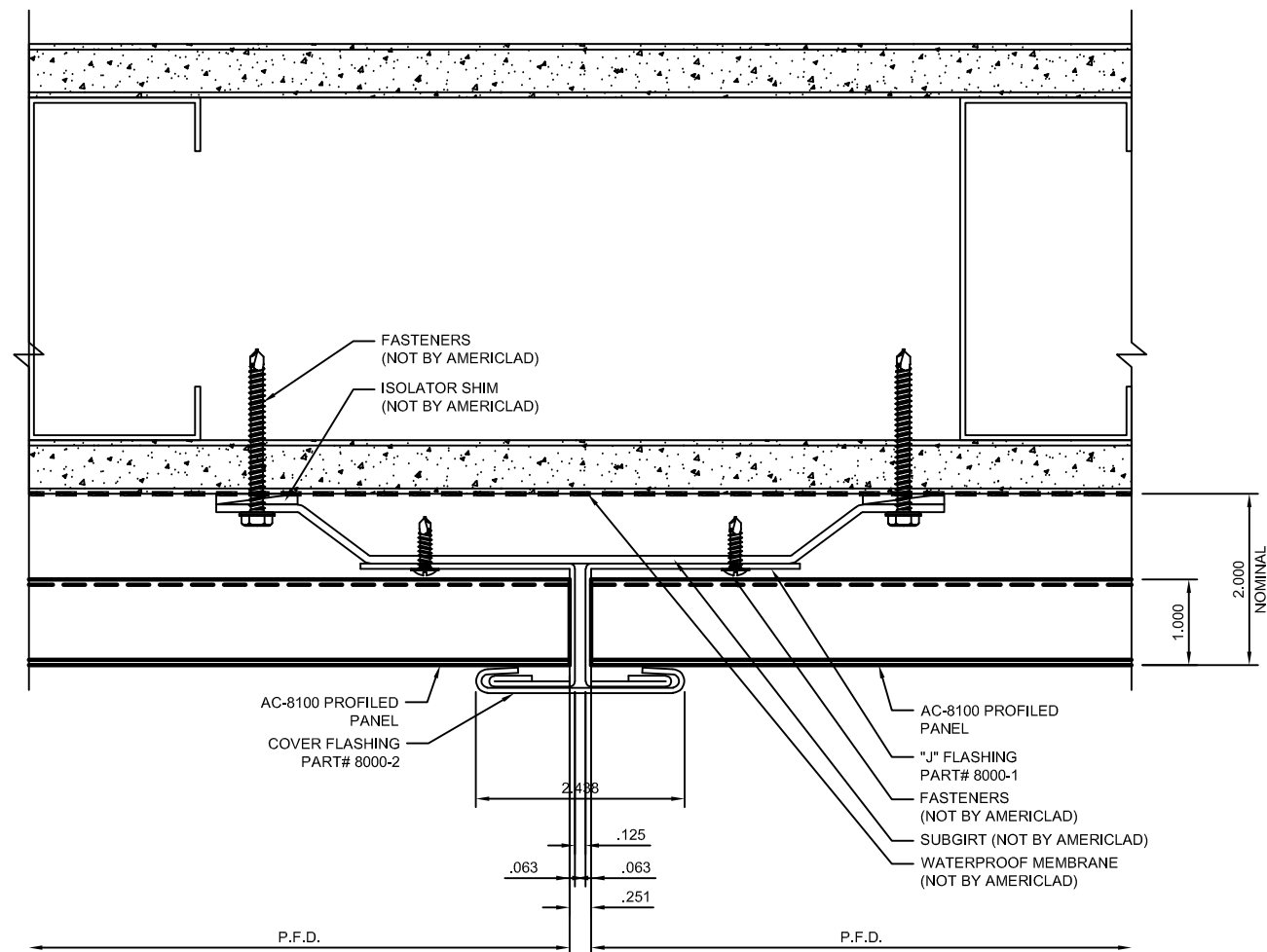


NOTE: SPLICE PLATE SHOWN N.T.S.

TYPICAL VERTICAL DETAIL (OPTION #2)

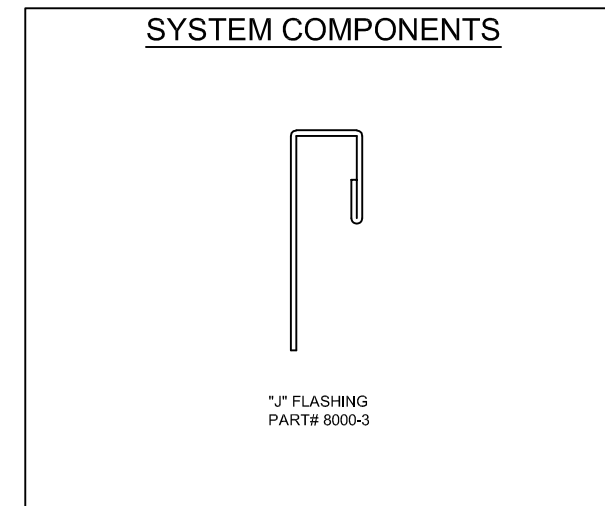
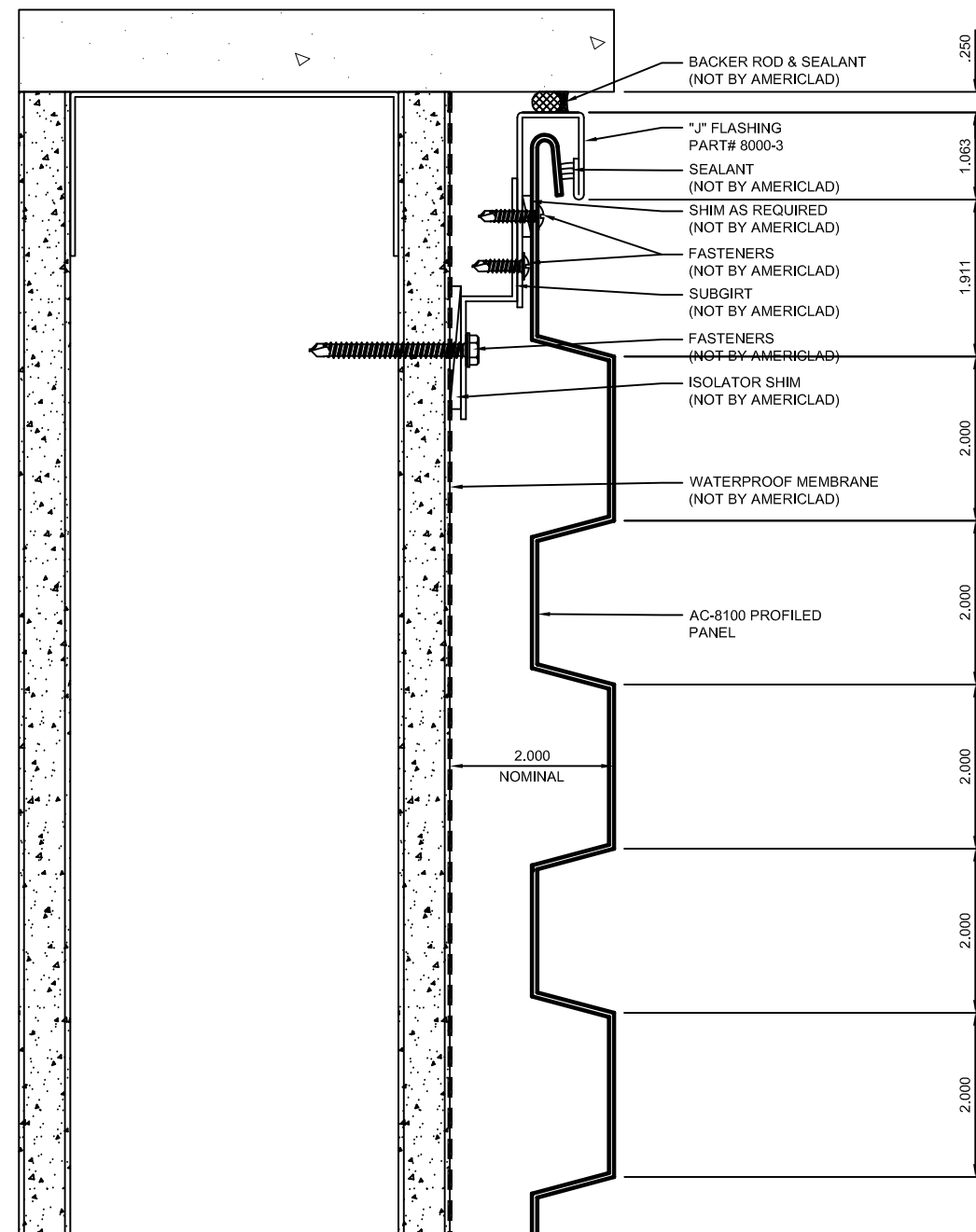
DETAIL B

NOTE:
LOAD BEARING WALL COMPONENTS OF EITHER: 16GA STEEL STUDS, STRUCTURAL MEMBERS, MINIMUM 3/4" PLYWOOD OR CONCRETE. GYPSUM BOARD AND CEMENT BOARD ARE NOT A STRUCTURAL COMPONENT.



TERMINATION DETAIL @ COPING
DETAIL C

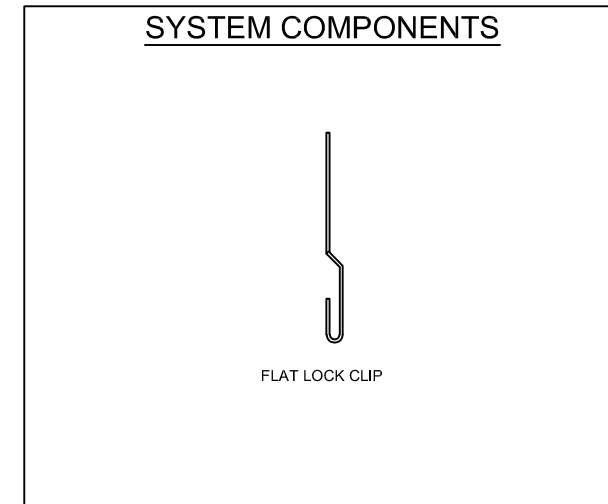
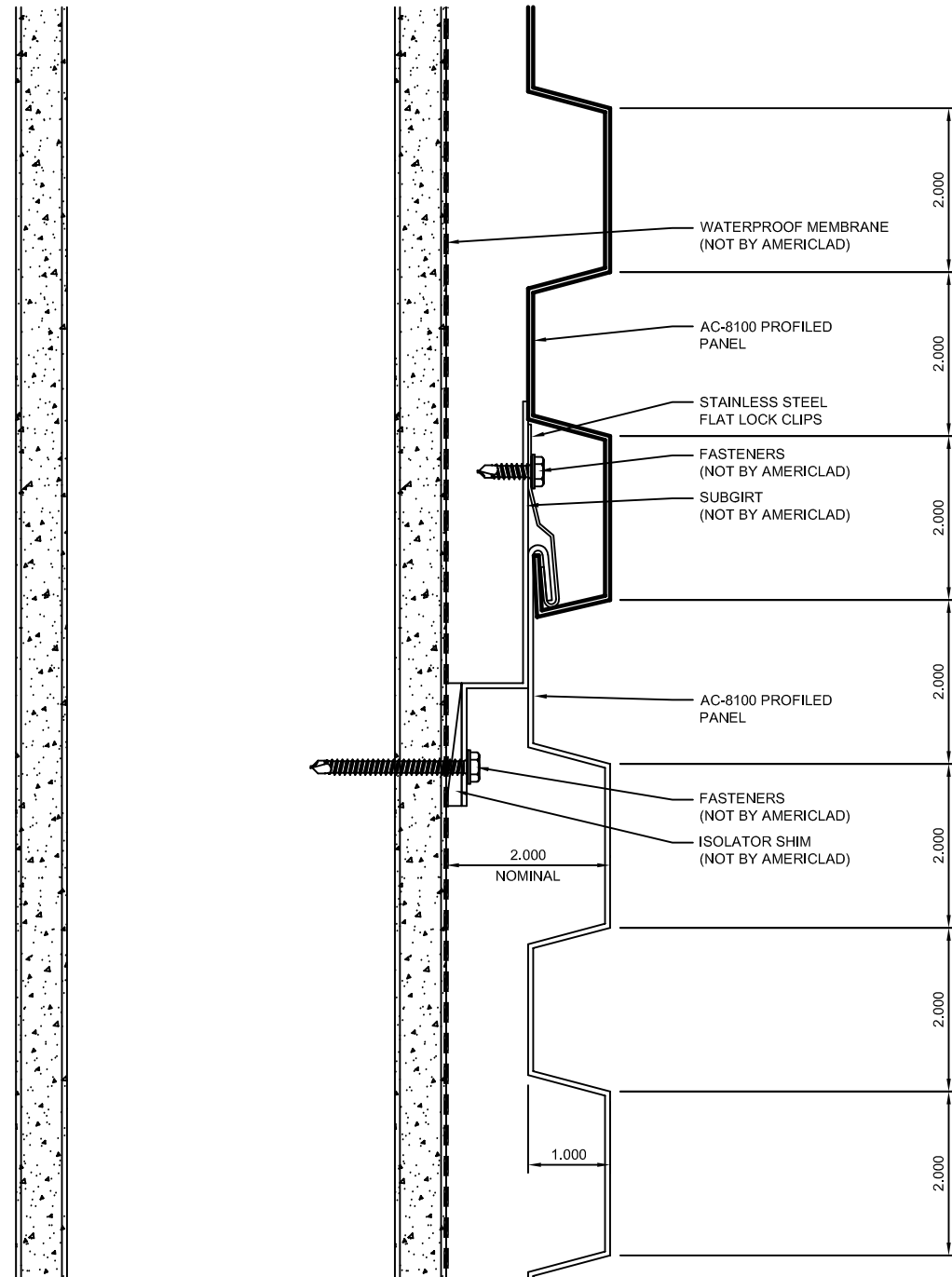
NOTE:
 LOAD BEARING WALL COMPONENTS OF EITHER: 16GA STEEL STUDS, STRUCTURAL MEMBERS, MINIMUM 3/4" PLYWOOD OR CONCRETE. GYPSUM BOARD AND CEMENT BOARD ARE NOT A STRUCTURAL COMPONENT.



TYPICAL HORIZONTAL JOINT DETAIL

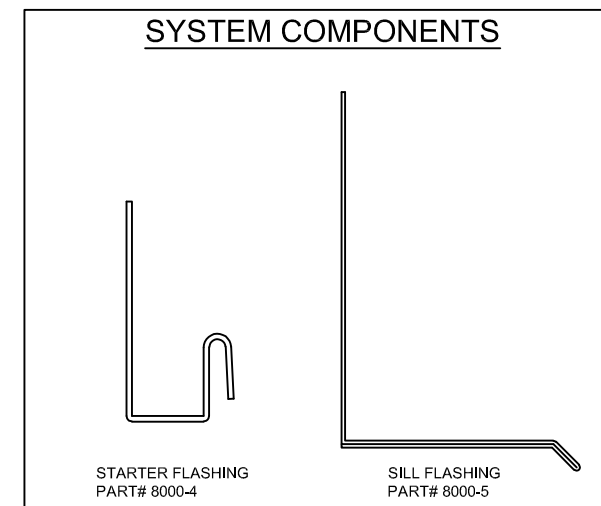
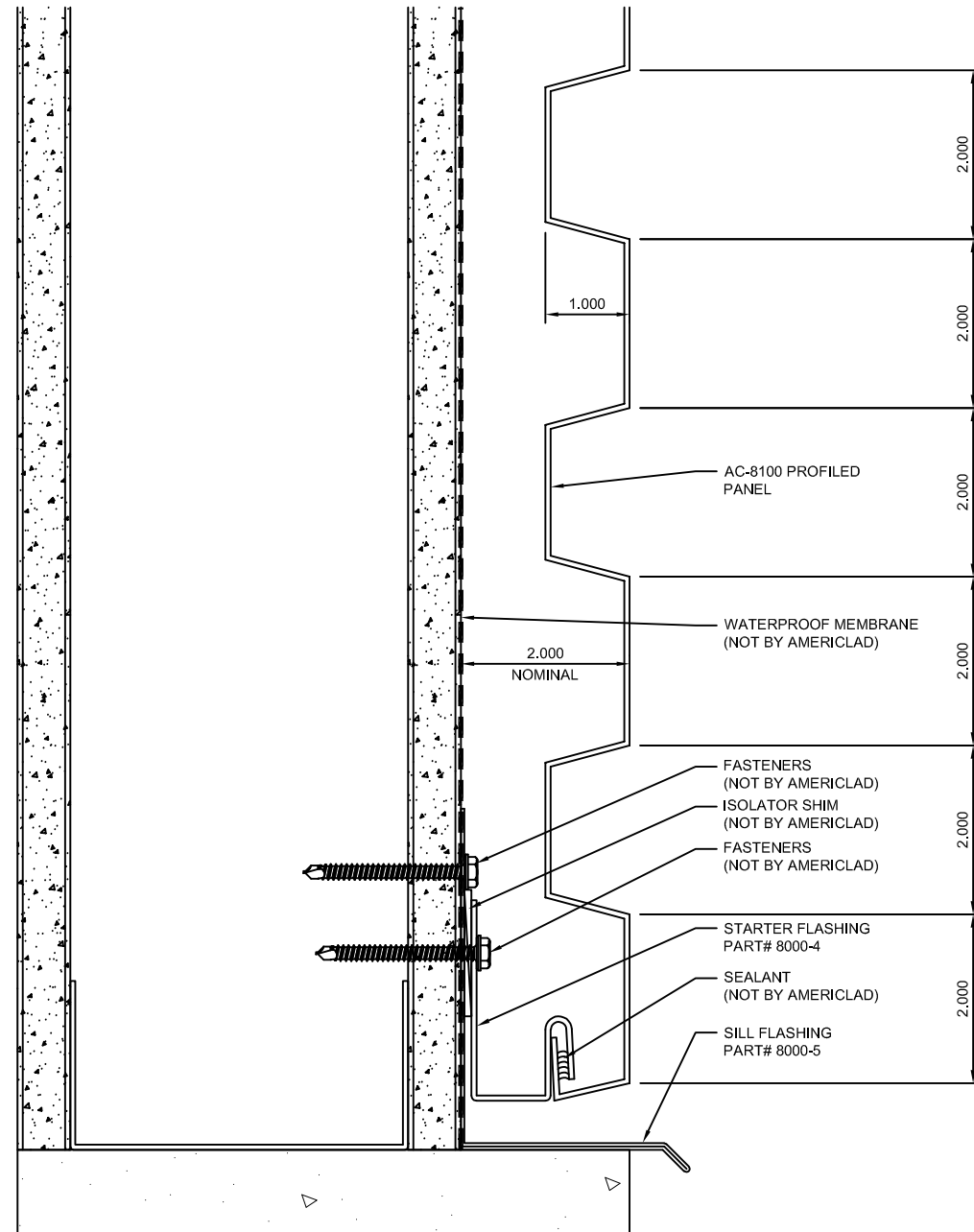
DETAIL D

NOTE:
 LOAD BEARING WALL COMPONENTS OF EITHER: 16GA STEEL STUDS, STRUCTURAL MEMBERS, MINIMUM 3/4" PLYWOOD OR CONCRETE. GYPSUM BOARD AND CEMENT BOARD ARE NOT A STRUCTURAL COMPONENT.



BASE DETAIL
DETAIL E

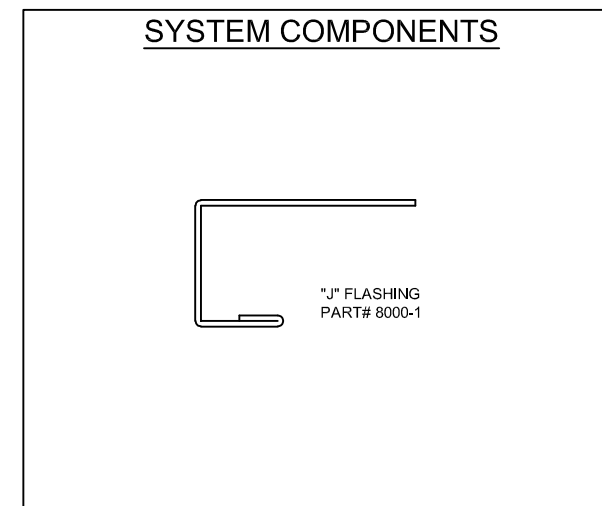
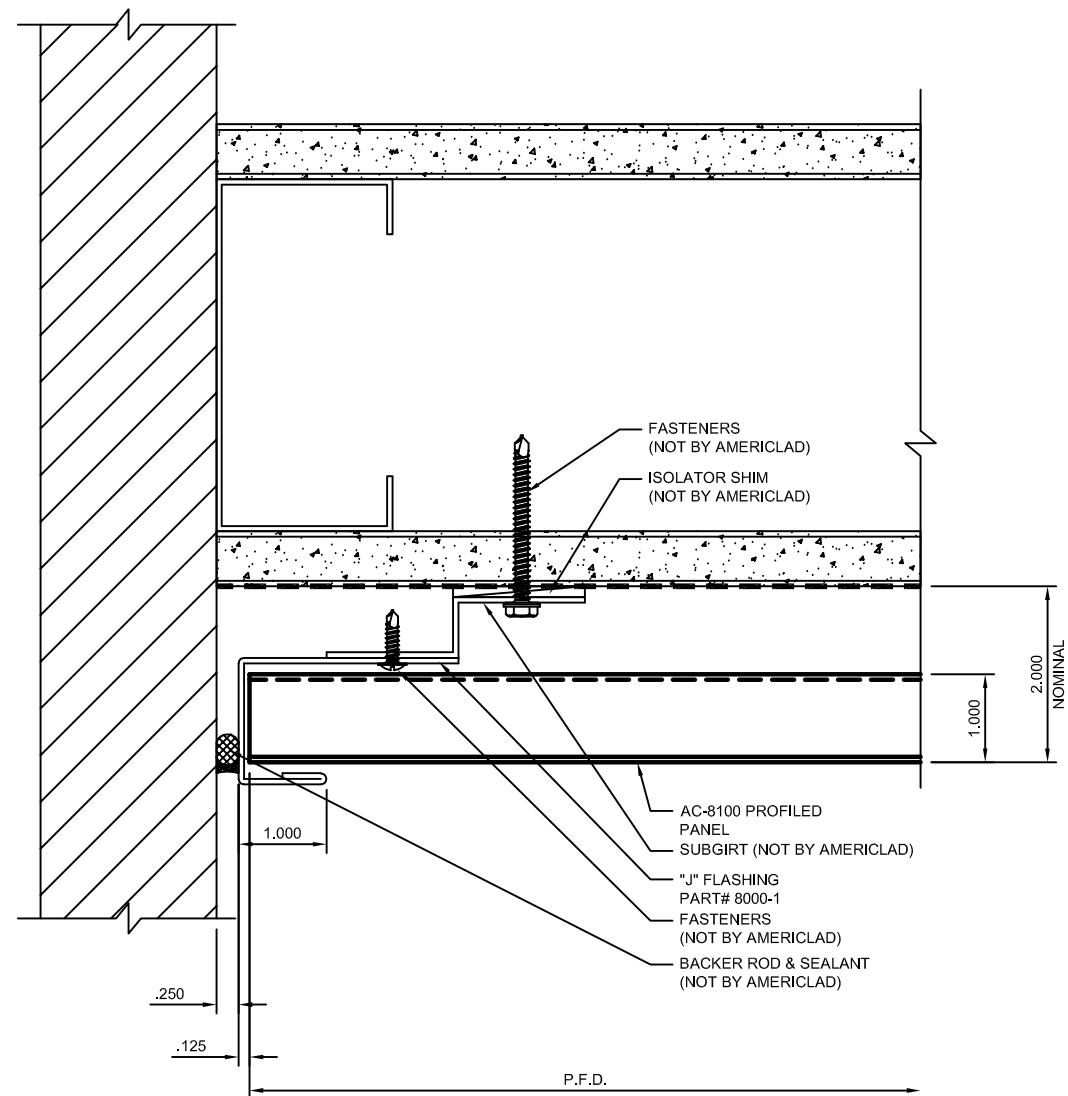
NOTE:
 LOAD BEARING WALL COMPONENTS OF EITHER: 16GA STEEL STUDS, STRUCTURAL MEMBERS, MINIMUM 3/4" PLYWOOD OR CONCRETE. GYPSUM BOARD AND CEMENT BOARD ARE NOT A STRUCTURAL COMPONENT.



TERMINATION DETAIL

DETAIL F

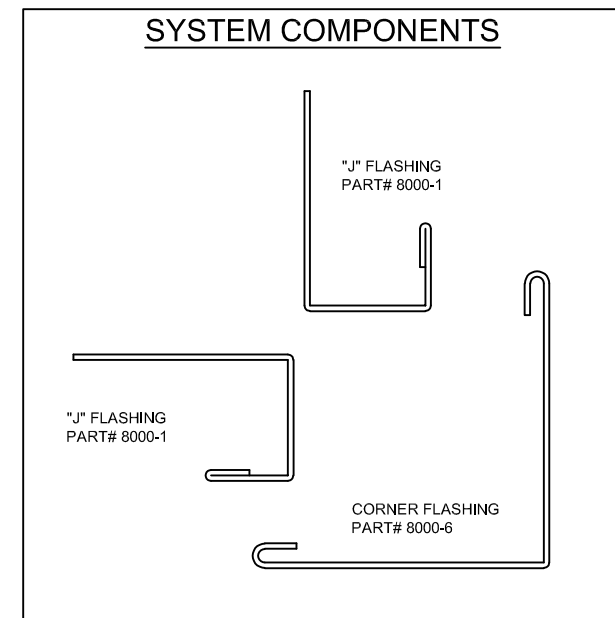
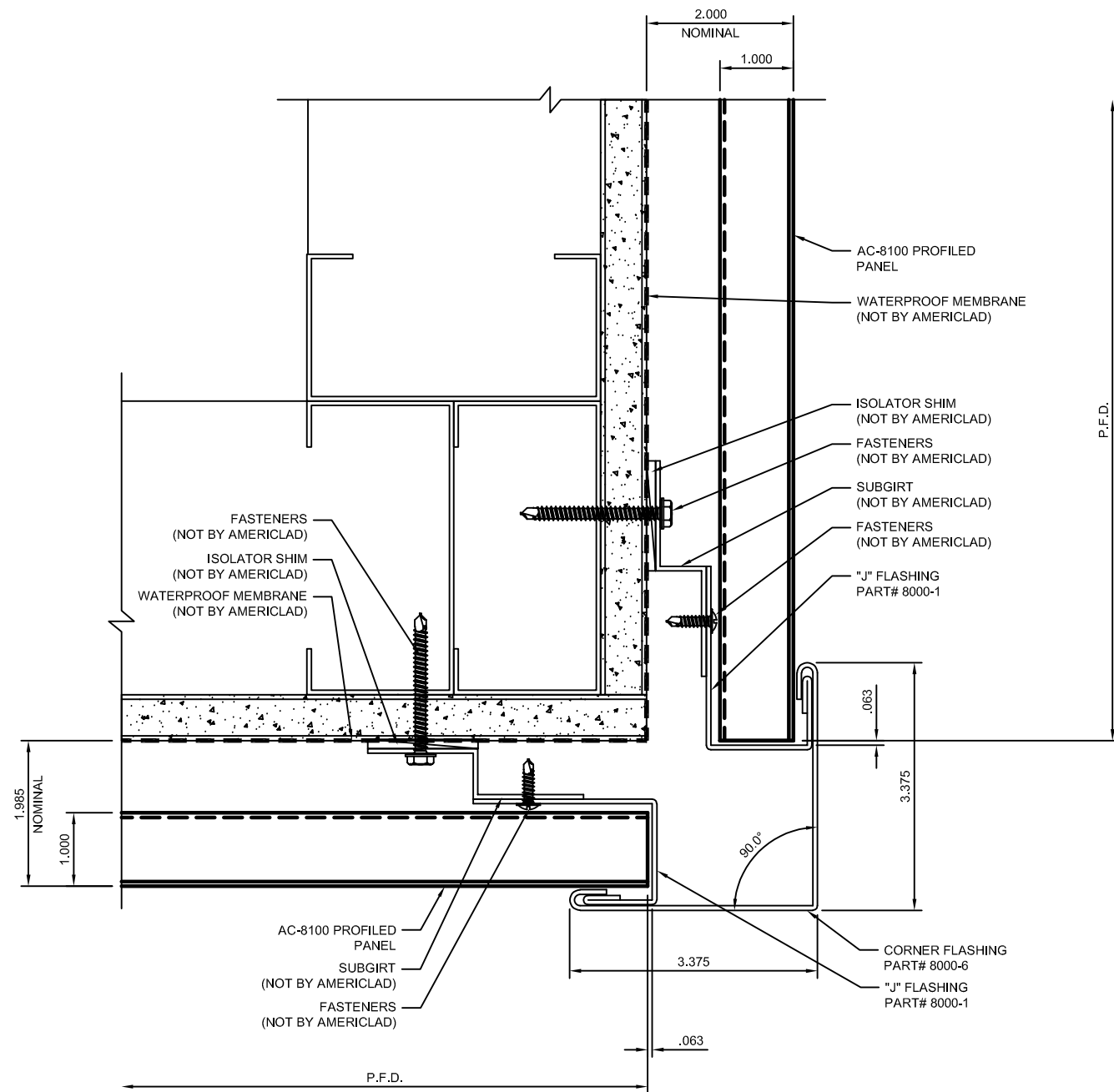
NOTE:
 LOAD BEARING WALL COMPONENTS OF EITHER: 16GA STEEL STUDS, STRUCTURAL MEMBERS, MINIMUM 3/4" PLYWOOD OR CONCRETE. GYPSUM BOARD AND CEMENT BOARD ARE NOT A STRUCTURAL COMPONENT.



OUTSIDE CORNER PLAN DETAIL

DETAIL G

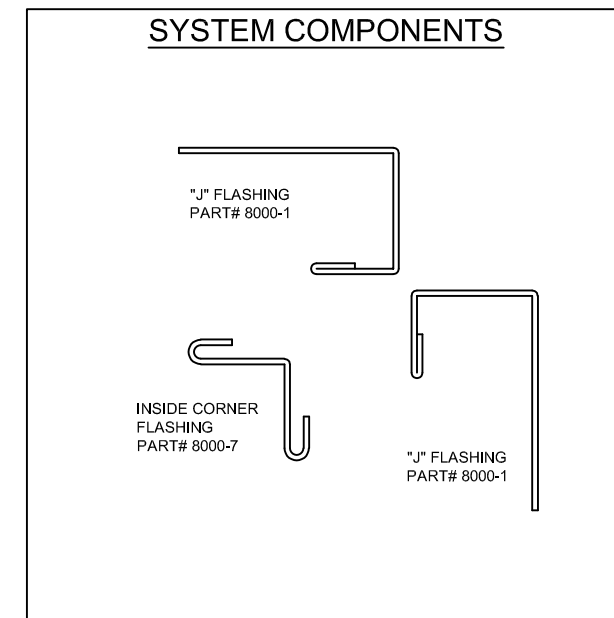
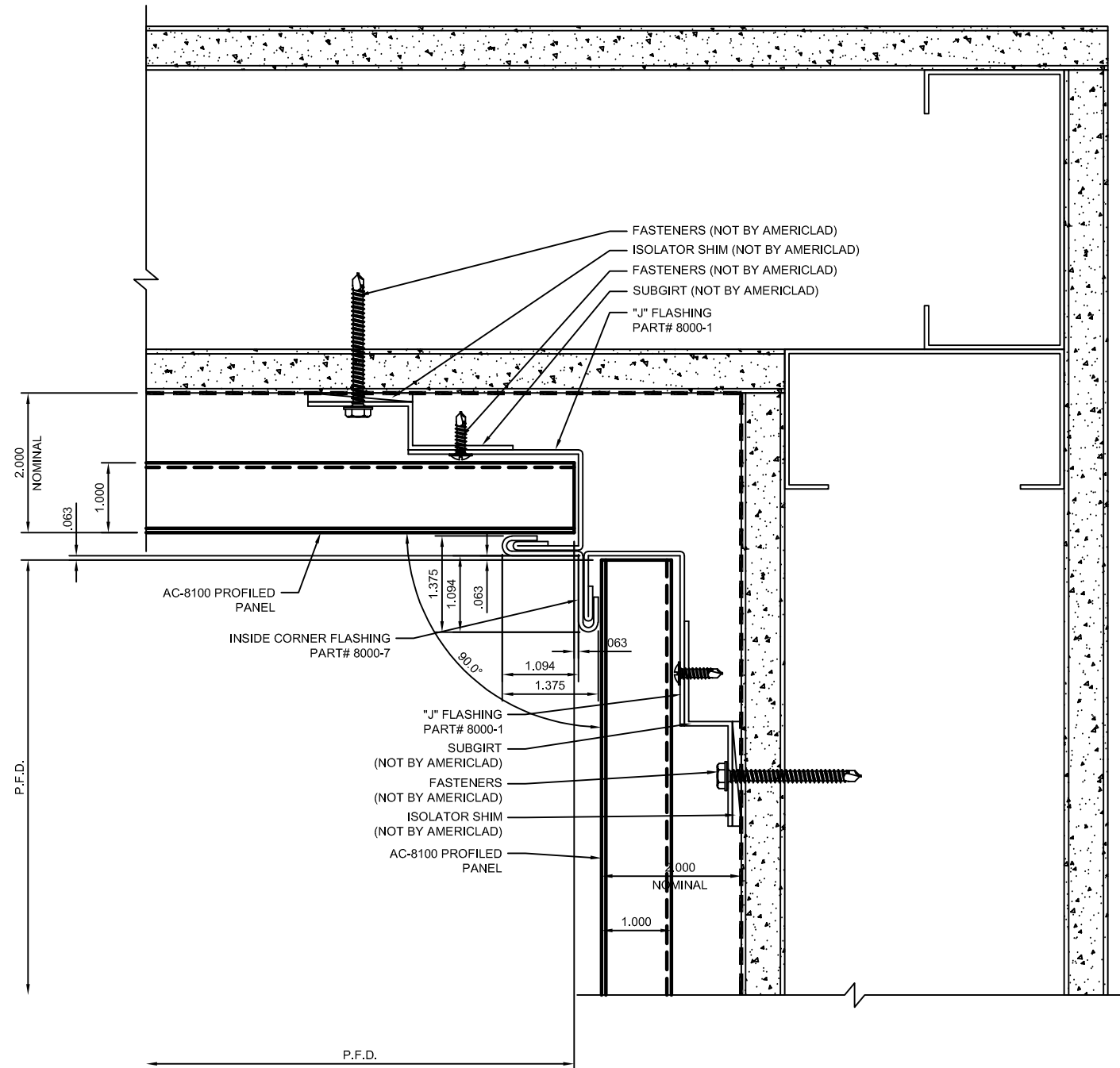
NOTE:
LOAD BEARING WALL COMPONENTS OF EITHER: 16GA STEEL STUDS, STRUCTURAL MEMBERS, MINIMUM 3/4" PLYWOOD OR CONCRETE. GYPSUM BOARD AND CEMENT BOARD ARE NOT A STRUCTURAL COMPONENT.



INSIDE CORNER PLAN DETAIL

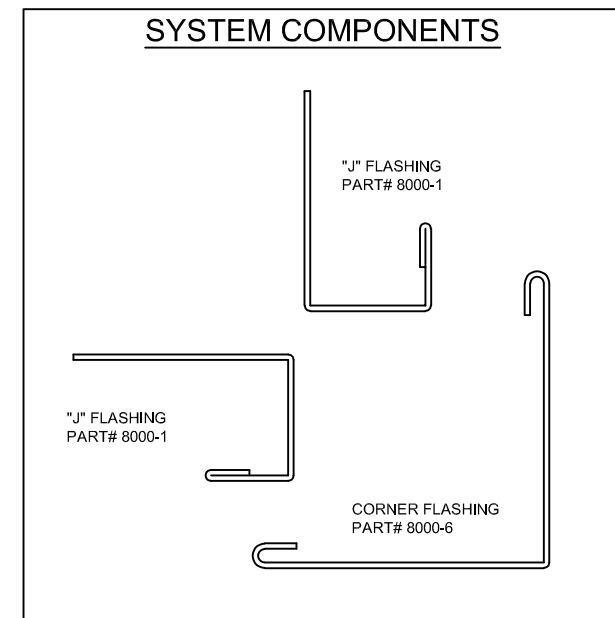
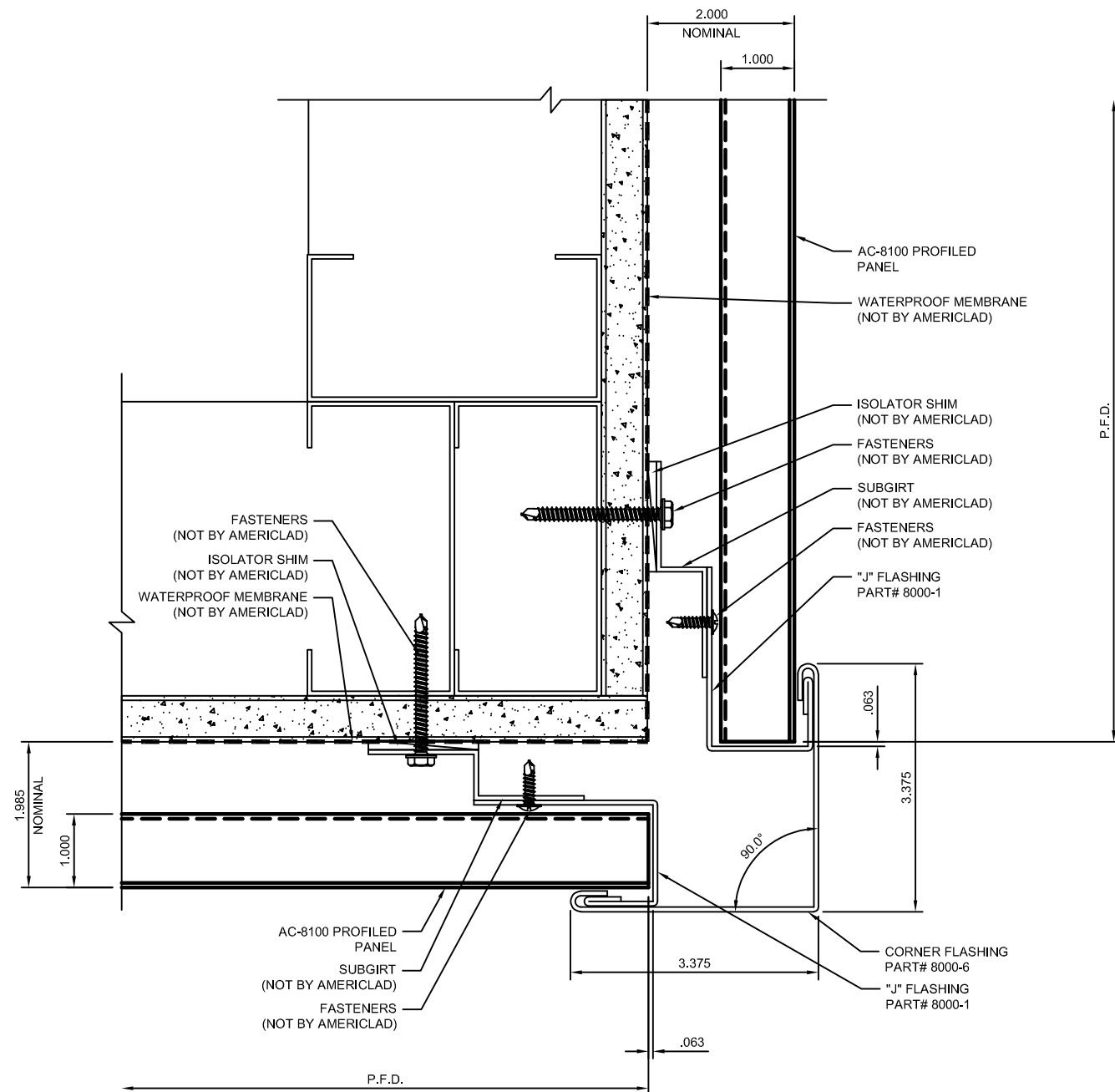
DETAIL H

NOTE:
 LOAD BEARING WALL COMPONENTS OF EITHER: 16GA STEEL STUDS, STRUCTURAL MEMBERS, MINIMUM 3/4" PLYWOOD OR CONCRETE. GYPSUM BOARD AND CEMENT BOARD ARE NOT A STRUCTURAL COMPONENT.



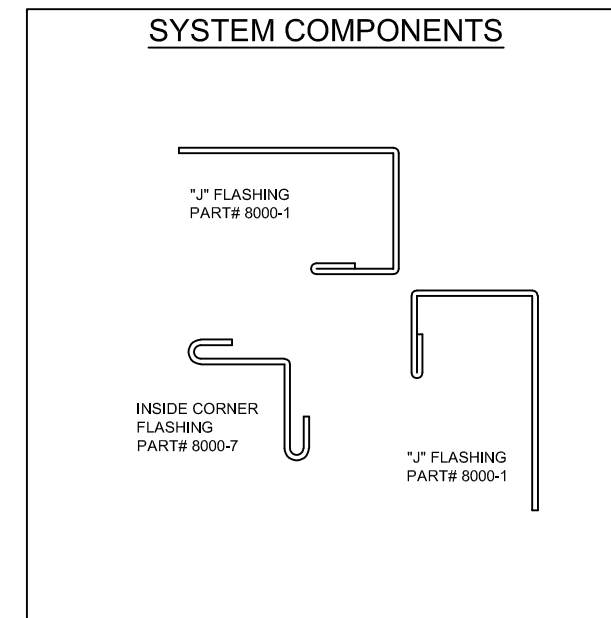
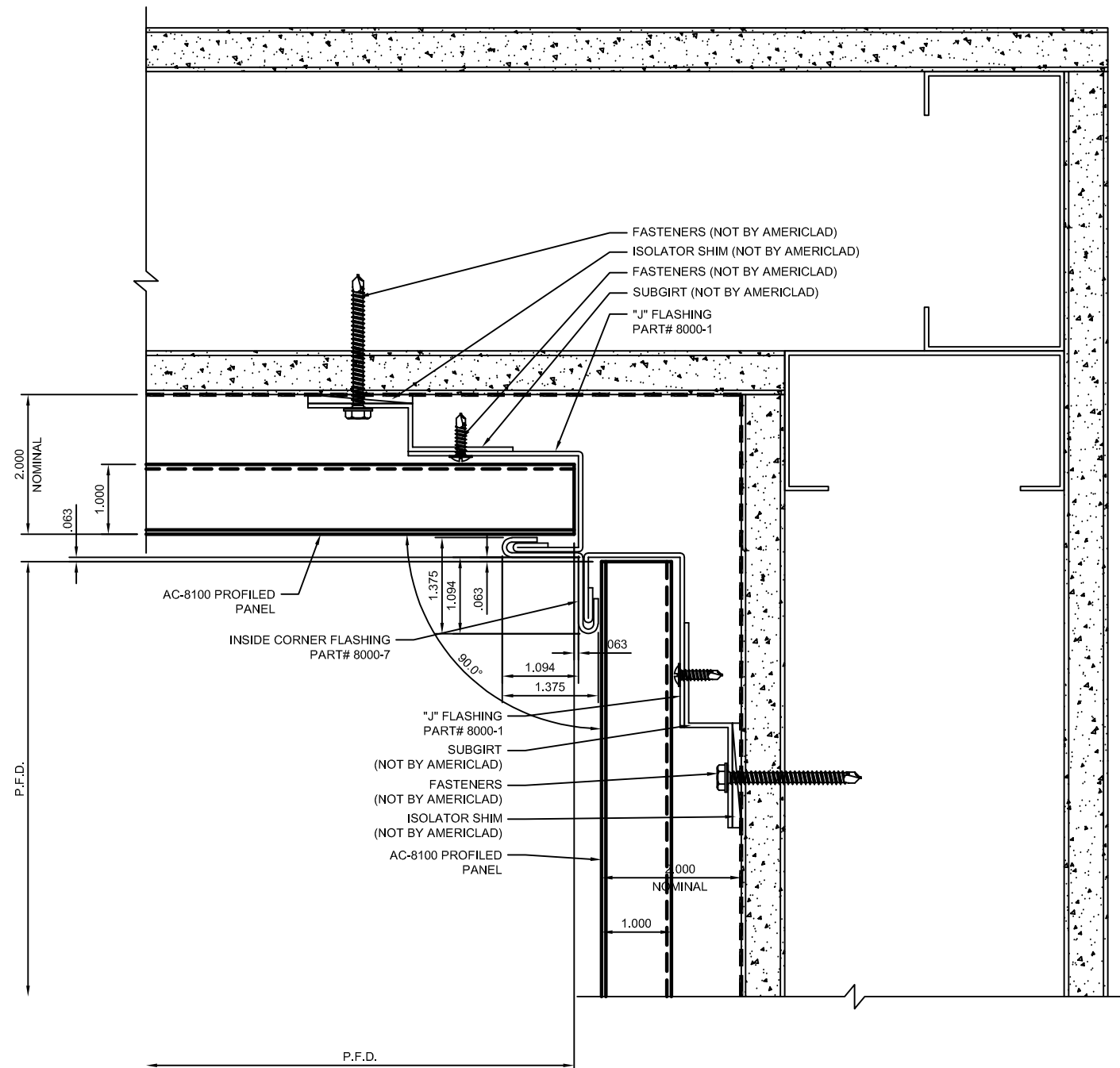
SECTION @ SOFFIT TRANSITION
DETAIL J

NOTE:
LOAD BEARING WALL COMPONENTS OF EITHER: 16GA STEEL STUDS, STRUCTURAL MEMBERS, MINIMUM 3/4" PLYWOOD OR CONCRETE. GYPSUM BOARD AND CEMENT BOARD ARE NOT A STRUCTURAL COMPONENT.



SECTION @ SOFFIT
DETAIL K

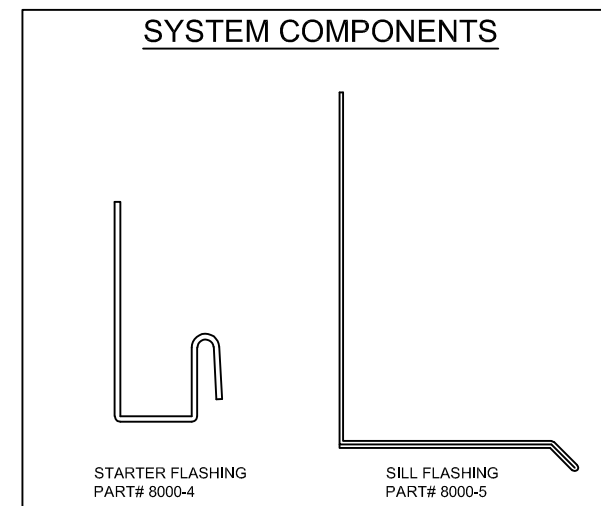
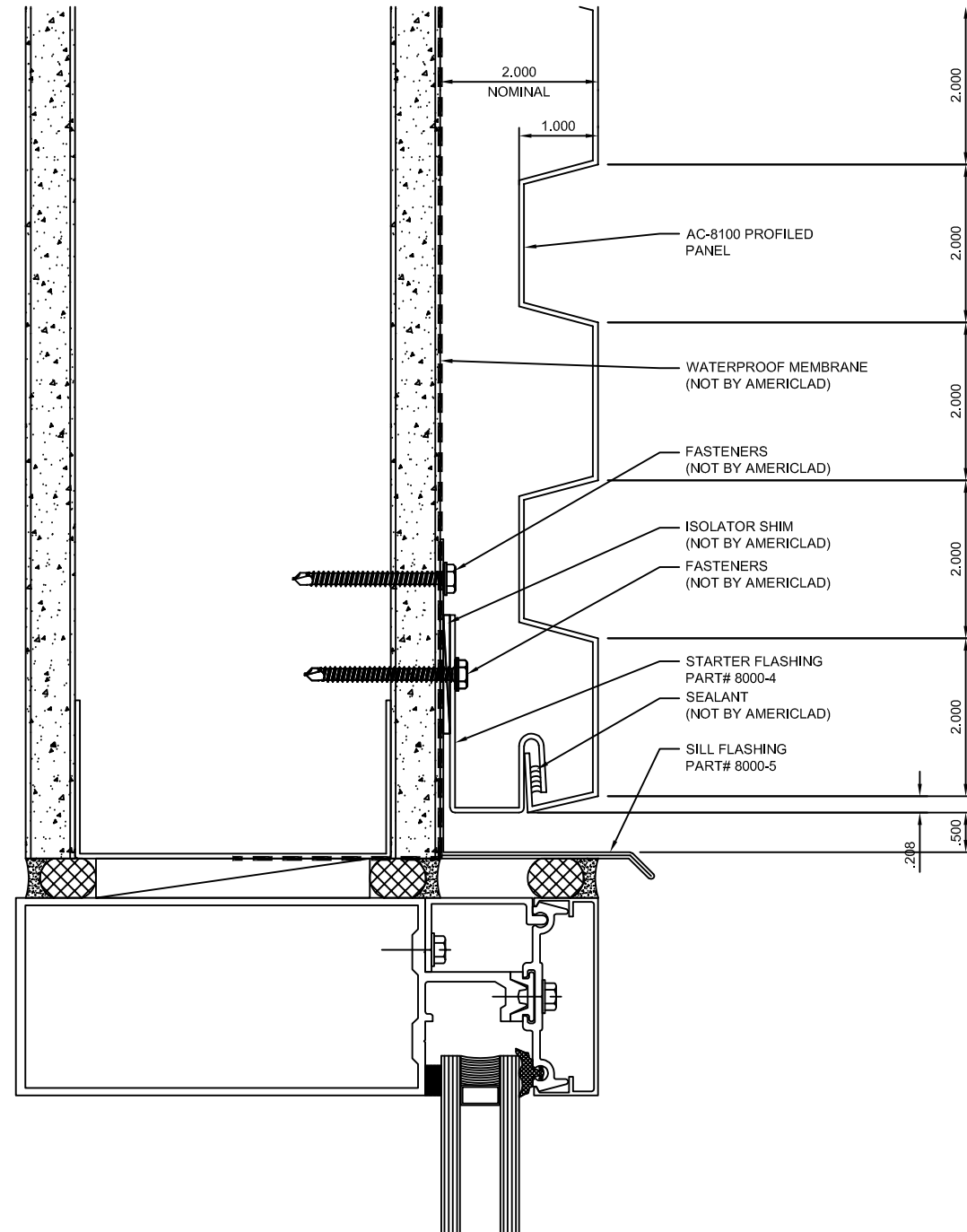
NOTE:
LOAD BEARING WALL COMPONENTS OF EITHER: 16GA STEEL STUDS, STRUCTURAL MEMBERS, MINIMUM 3/4" PLYWOOD OR CONCRETE. GYPSUM BOARD AND CEMENT BOARD ARE NOT A STRUCTURAL COMPONENT.



WINDOW HEAD DETAIL

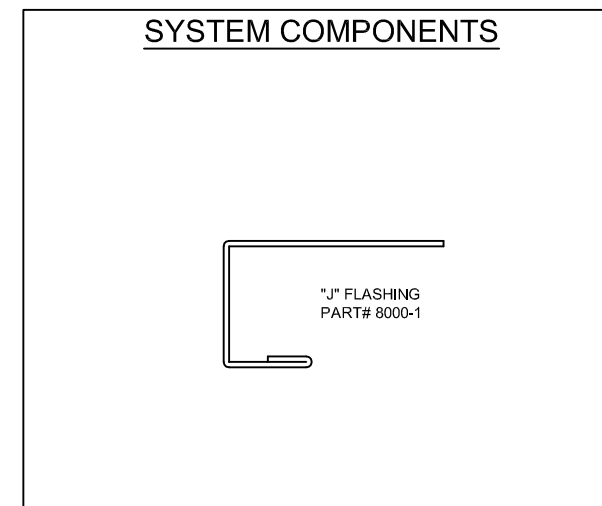
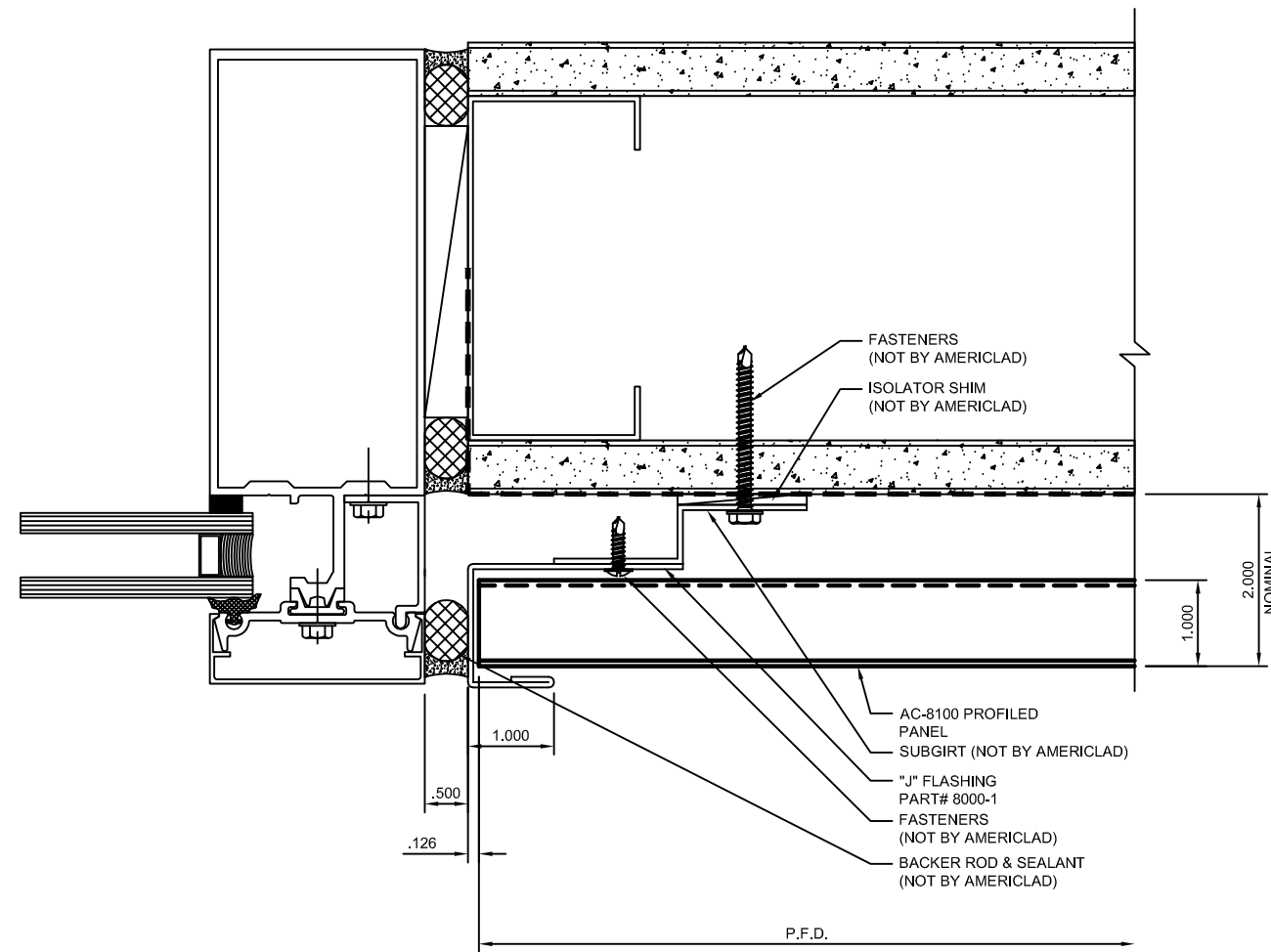
DETAIL M

NOTE:
 LOAD BEARING WALL COMPONENTS OF EITHER: 16GA STEEL STUDS, STRUCTURAL MEMBERS, MINIMUM 3/4" PLYWOOD OR CONCRETE. GYPSUM BOARD AND CEMENT BOARD ARE NOT A STRUCTURAL COMPONENT.



WINDOW JAMB DETAIL
DETAIL N

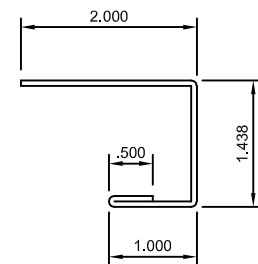
NOTE:
 LOAD BEARING WALL COMPONENTS OF EITHER: 16GA STEEL STUDS, STRUCTURAL MEMBERS, MINIMUM 3/4" PLYWOOD OR CONCRETE. GYPSUM BOARD AND CEMENT BOARD ARE NOT A STRUCTURAL COMPONENT.



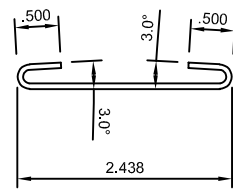
FLASHING PROFILES

DETAIL O

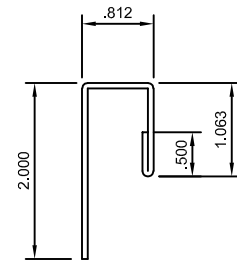
NOTE:
LOAD BEARING WALL COMPONENTS OF EITHER: 16GA STEEL STUDS, STRUCTURAL MEMBERS, MINIMUM 3/4" PLYWOOD OR CONCRETE. GYPSUM BOARD AND CEMENT BOARD ARE NOT A STRUCTURAL COMPONENT.



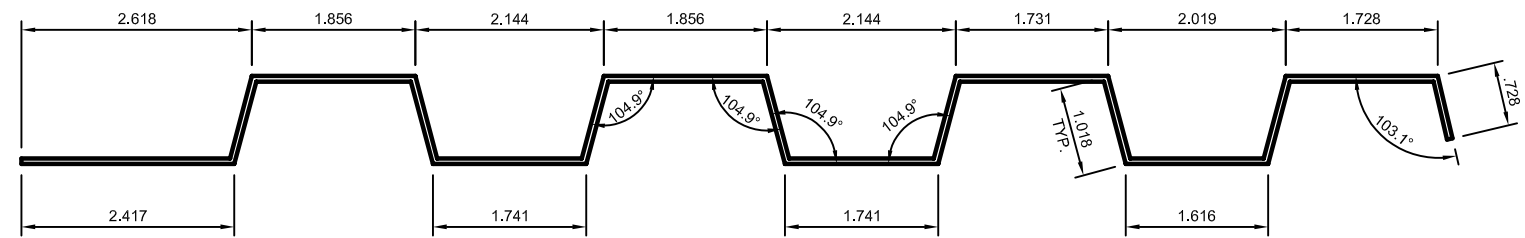
"J" FLASHING
 PART# 8000-1
QTY:
10'-0" STOCK LENGTHS



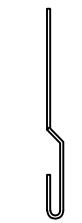
COVER FLASHING
 PART# 8000-2
QTY:
10'-0" STOCK LENGTHS



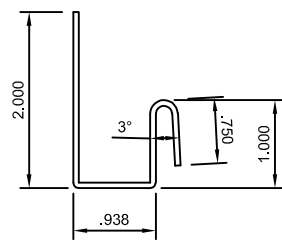
"J" FLASHING
 PART# 8000-3
QTY:
10'-0" STOCK LENGTHS



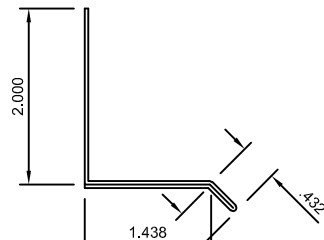
SPLICE PLATE
 PART# 8100-2
QTY:
6" LENGTHS



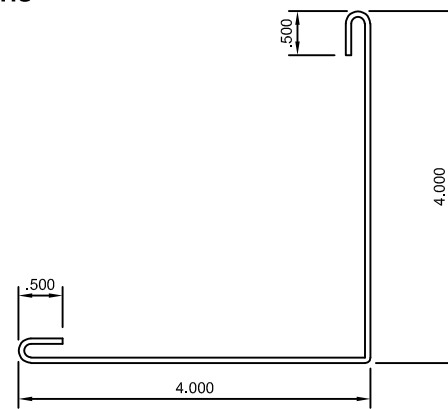
FLAT LOCK CLIP



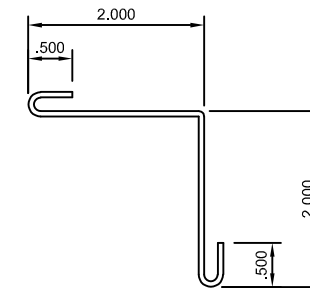
STARTER FLASHING
 PART# 8000-4
QTY:
10'-0" STOCK LENGTHS



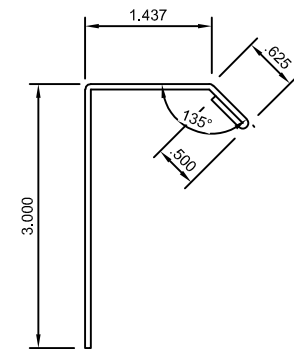
SILL FLASHING
 PART# 8000-5
QTY:
10'-0" STOCK LENGTHS



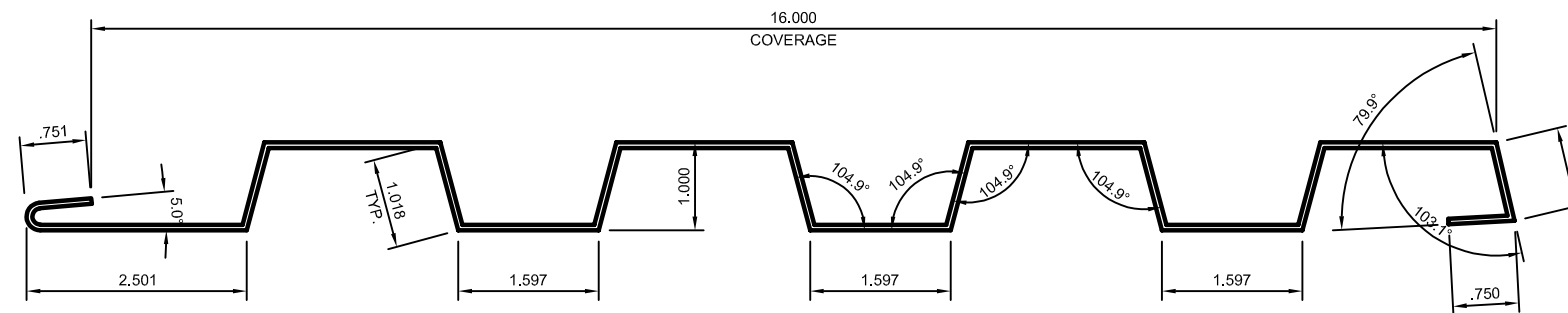
CORNER FLASHING
 PART# 8000-6
QTY:
10'-0" STOCK LENGTHS



INSIDE CORNER FLASHING
 PART# 8000-7
QTY:
10'-0" STOCK LENGTHS



WINDOW SILL FLASHING
 PART# 8000-8
QTY:
10'-0" STOCK LENGTHS



PANEL PROFILE
 PART# 8100-1
QTY:
LENGTH: